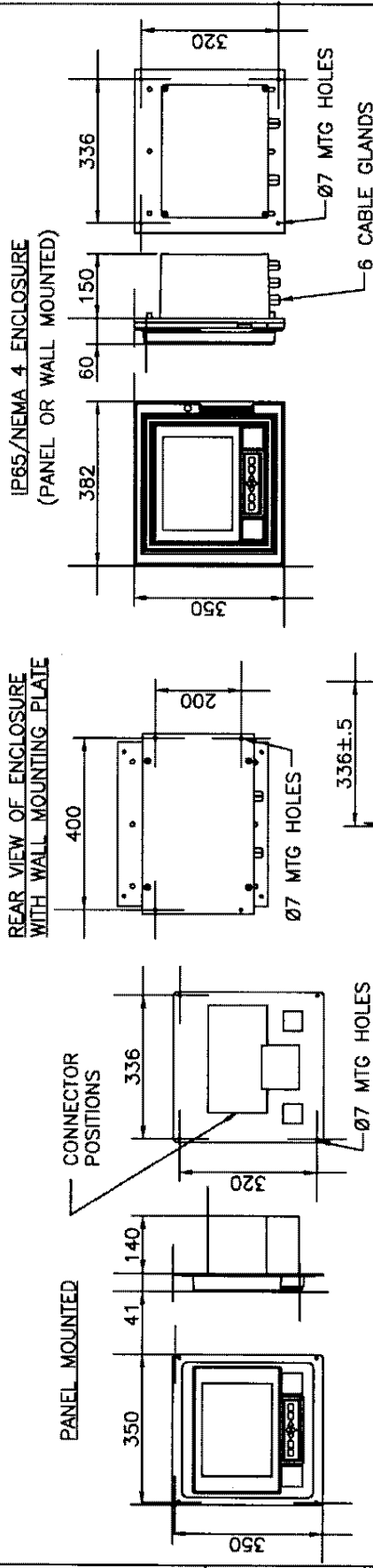


# TITLE DATA SHEET FOR CIRCUITREND V5

 THIRD ANGLE PROJECTION TO B.S. 308	 FOR GENERAL TOLERANCES & FINISHES SEE TRENDSHEET STANDARD 001 FOR GEOMETRIC TOLERANCES SEE B.S. 308 Pt3	HOLE DATA	
		HOLE No. OF REF. HOLES	DESCRIPTION
			POS. TOL.



<b>DISPLAY SIZE</b> 10.4 INCH COLOUR HIGH BRIGHTNESS WIDE VIEWING ANGLE VGA (640 X 480 PIXELS) INDUSTRIAL LCD (TFT)	<b>EIRWARE</b> MATHS EXPRESSION TOTALISATION EVENT MARKERS	USER PROGRAMMABLE 60 CHARACTER MATHS CALCULATION FOR EACH PEN USER PROGRAMMABLE 10 DIGIT TOTALISER FOR EACH PEN 10 USER DEFINED PROCESS EVENTS ARE RECORDED AND ACTIONED
<b>PEN INPUTS (ANALOGUE CARD)</b> 125ms FOR ALL CHANNELS 2,4,6,8 0-20mA, 4-20mA (INTO 10 OHMS), 0-5V, 1-5V (>1MOHMS) <0.01% ±0.5% OF FULL RANGE 100Vdc CHANNEL TO CHANNEL, CHANNEL TO GROUND	<b>POWER</b> VOLTAGE CONSUMPTION INSTALLATION PANEL CUT-OUT PANEL THICKNESS WEIGHT	90 TO 264V <sub>ac</sub> , 47 to 440Hz <30VA SEE ABOVE 2 MINIMUM 5kg MAX PANEL MOUNTED 10.5kg MAX IP65/NEMA 4 1/16 DIN - 2 QN
<b>RESOLUTION ACCURACY ISOLATION</b> 128 KILOBYTE 1.44 MEGABYTE FLOPPY EEPROM	<b>CONTROLLER CUT-OUT</b> OPTIONS REFER TO BROCHURE	

MATERIAL	FINISH	TOLERANCES	SCALE	NITS	ISSUE	1	DATE	14.01.99
			DIMS	mm	CHANGE	NEW		