

SX 165 & 250 Recorder Wiring Diagrams

1 and 2 Pen Recorders

ADD
D L2

QUAL

(BANDS)

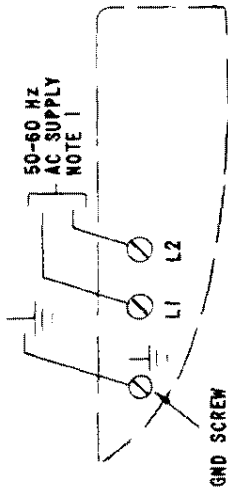
IRING.

NO. OF ELEMENTS	—	COMPT. R-Y	ALLOT R-B
--------------------	---	---------------	--------------

SX 165 & 250 Recorder Wiring Diagrams

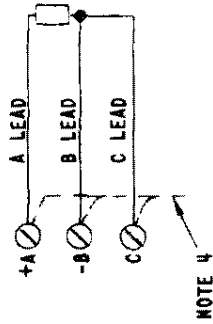
1 and 2 Pen Recorders

INPUT TERMINAL AREA - REAR VIEW

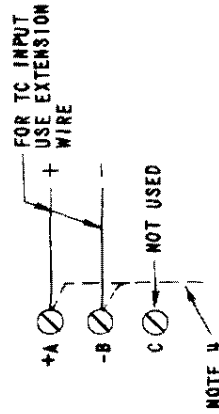


TYPICAL CUSTOMER CONNECTIONS

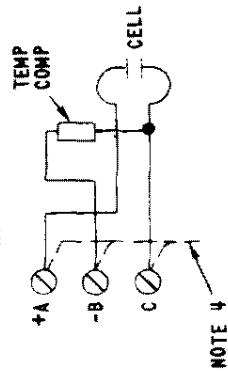
RTD NOTES 2 & 3



TC/EMF NOTE 3

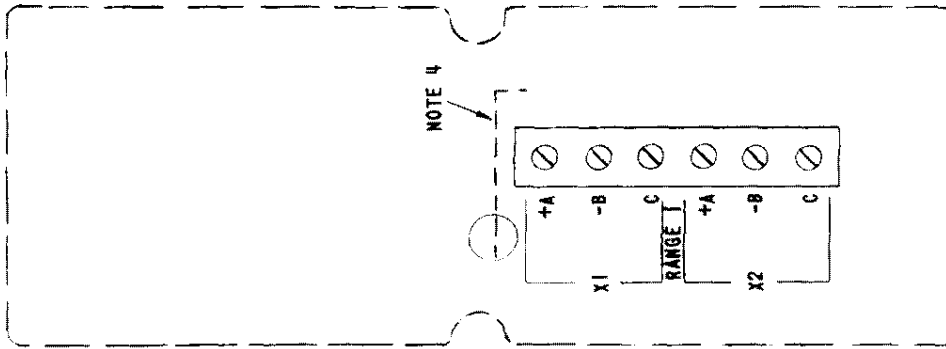


AC CONDUCTIVITY NOTE 3



NOTES

1. L2 SIDE OF LINE SHOULD BE GROUNDED. IF LINE SUPPLY CAN NOT BE GROUNDED, ADD ISOLATING TRANSFORMER AND GROUND L2 TERMINAL.
2. A & B LEADS TO THERMOHM MUST BE EQUAL IN RESISTANCE.
3. CUSTOMER WIRE:
 - a. SINGLE CONDUCTOR (SOLID OR STRANDED #14 GAGE OR SMALLER.
 - b. DOUBLE CONNECTOR, #18 GAGE OR SMALLER.
4. DOTTED CONNECTIONS INDICATE L&N WIRING.



THERMOCOUPLE EXTENSION WIRE TABLE	
INTERNAL TO INSTRUMENT	EXTERNAL TO INSTRUMENT
COPT. B-3	COPT. B-3
COPT. B-4	COPT. B-4
COPT. B-5	COPT. B-5
COPT. B-6	COPT. B-6
COPT. B-7	COPT. B-7
COPT. B-8	COPT. B-8
COPT. B-9	COPT. B-9
COPT. B-10	COPT. B-10
COPT. B-11	COPT. B-11
COPT. B-12	COPT. B-12
COPT. B-13	COPT. B-13
COPT. B-14	COPT. B-14
COPT. B-15	COPT. B-15
COPT. B-16	COPT. B-16
COPT. B-17	COPT. B-17
COPT. B-18	COPT. B-18
COPT. B-19	COPT. B-19
COPT. B-20	COPT. B-20
COPT. B-21	COPT. B-21
COPT. B-22	COPT. B-22
COPT. B-23	COPT. B-23
COPT. B-24	COPT. B-24
COPT. B-25	COPT. B-25
COPT. B-26	COPT. B-26
COPT. B-27	COPT. B-27
COPT. B-28	COPT. B-28
COPT. B-29	COPT. B-29
COPT. B-30	COPT. B-30
COPT. B-31	COPT. B-31
COPT. B-32	COPT. B-32
COPT. B-33	COPT. B-33
COPT. B-34	COPT. B-34
COPT. B-35	COPT. B-35
COPT. B-36	COPT. B-36
COPT. B-37	COPT. B-37
COPT. B-38	COPT. B-38
COPT. B-39	COPT. B-39
COPT. B-40	COPT. B-40
COPT. B-41	COPT. B-41
COPT. B-42	COPT. B-42
COPT. B-43	COPT. B-43
COPT. B-44	COPT. B-44
COPT. B-45	COPT. B-45
COPT. B-46	COPT. B-46
COPT. B-47	COPT. B-47
COPT. B-48	COPT. B-48
COPT. B-49	COPT. B-49
COPT. B-50	COPT. B-50
COPT. B-51	COPT. B-51
COPT. B-52	COPT. B-52
COPT. B-53	COPT. B-53
COPT. B-54	COPT. B-54
COPT. B-55	COPT. B-55
COPT. B-56	COPT. B-56
COPT. B-57	COPT. B-57
COPT. B-58	COPT. B-58
COPT. B-59	COPT. B-59
COPT. B-60	COPT. B-60
COPT. B-61	COPT. B-61
COPT. B-62	COPT. B-62
COPT. B-63	COPT. B-63
COPT. B-64	COPT. B-64
COPT. B-65	COPT. B-65
COPT. B-66	COPT. B-66
COPT. B-67	COPT. B-67
COPT. B-68	COPT. B-68
COPT. B-69	COPT. B-69
COPT. B-70	COPT. B-70
COPT. B-71	COPT. B-71
COPT. B-72	COPT. B-72
COPT. B-73	COPT. B-73
COPT. B-74	COPT. B-74
COPT. B-75	COPT. B-75
COPT. B-76	COPT. B-76
COPT. B-77	COPT. B-77
COPT. B-78	COPT. B-78
COPT. B-79	COPT. B-79
COPT. B-80	COPT. B-80
COPT. B-81	COPT. B-81
COPT. B-82	COPT. B-82
COPT. B-83	COPT. B-83
COPT. B-84	COPT. B-84
COPT. B-85	COPT. B-85
COPT. B-86	COPT. B-86
COPT. B-87	COPT. B-87
COPT. B-88	COPT. B-88
COPT. B-89	COPT. B-89
COPT. B-90	COPT. B-90
COPT. B-91	COPT. B-91
COPT. B-92	COPT. B-92
COPT. B-93	COPT. B-93
COPT. B-94	COPT. B-94
COPT. B-95	COPT. B-95
COPT. B-96	COPT. B-96
COPT. B-97	COPT. B-97
COPT. B-98	COPT. B-98
COPT. B-99	COPT. B-99
COPT. B-100	COPT. B-100

Fig. 1-11A—Customer connections—EMF, TC, RTD, and conductivity—single range.

SX 165 & 250 Recorder Wiring Diagrams

1 and 2 Pen Recorders

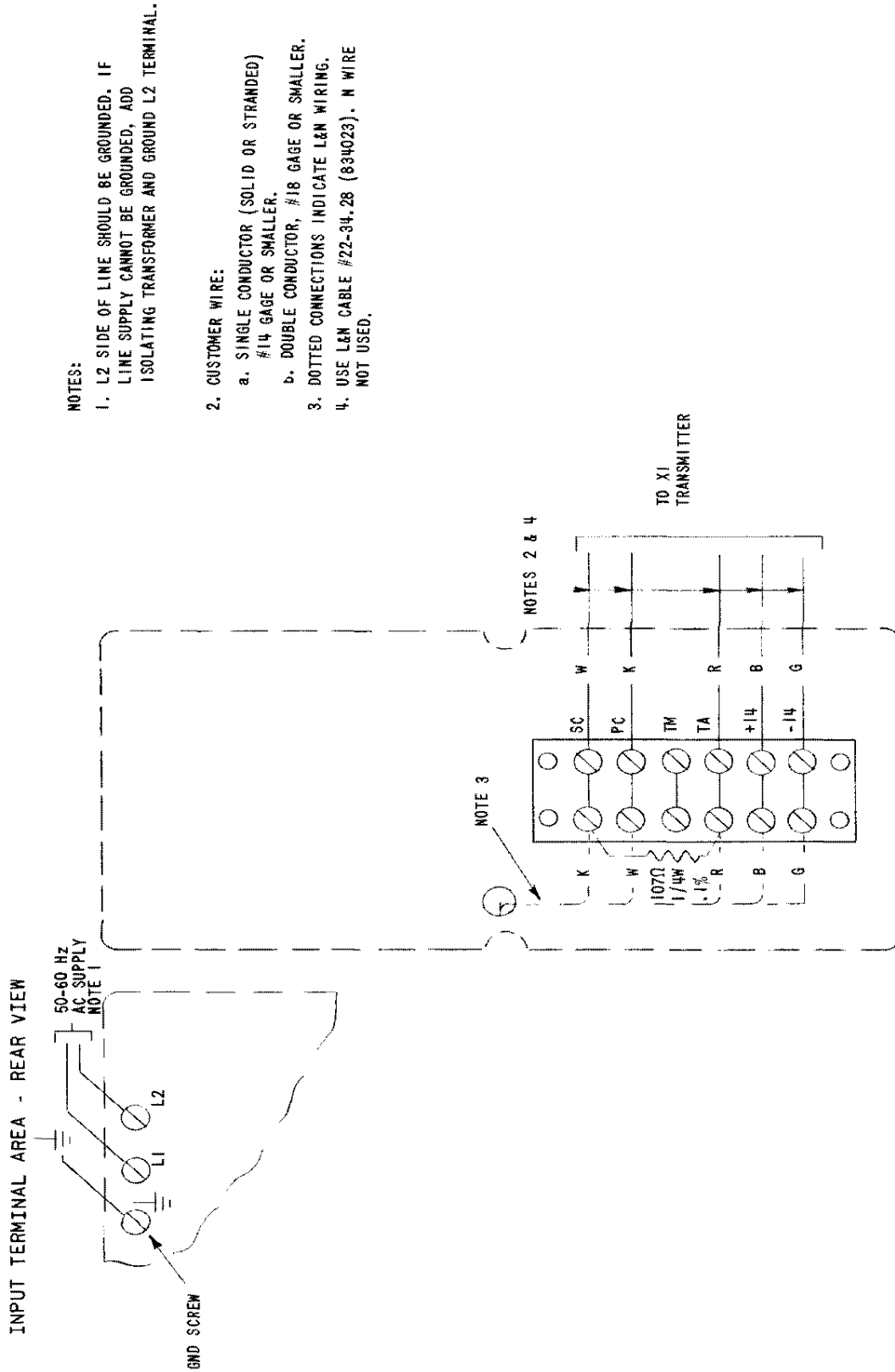
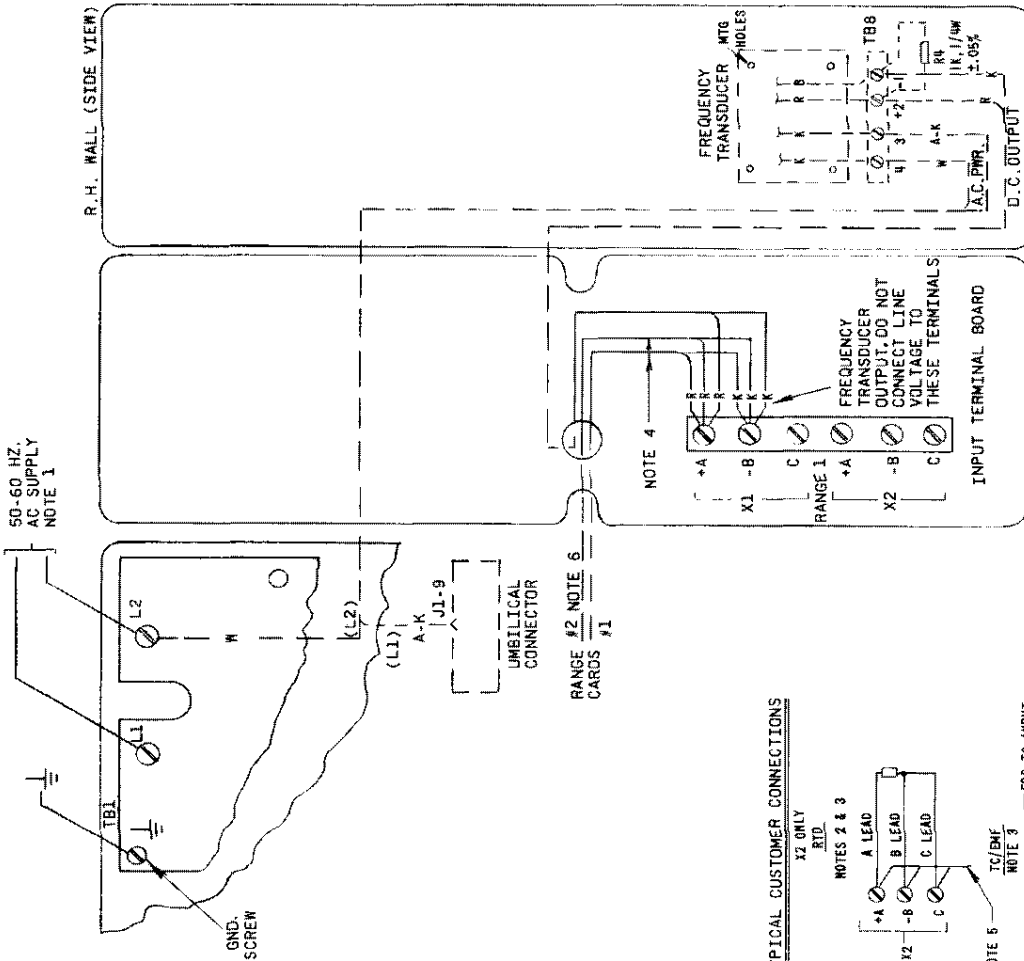


Fig. 1-11B—Customer's connections 1-pen pH recorder with automatic temperature compensation.

SX 165 & 250 Recorder Wiring Diagrams

1 and 2 Pen Recorders

INPUT TERMINAL AREA - REAR VIEW



NOTES:

1. L2 SIDE OF LINE SHOULD BE GROUNDED. IF LINE SUPPLY CANNOT BE GROUNDED, ADD ISOLATING TRANSFORMER AND GROUND L2 TERMINAL.
2. A & B LEADS TO THERMOHM MUST BE EQUAL IN RESISTANCE.
3. CUSTOMER WIRE:
 - a. SINGLE CONDUCTOR (SOLID OR STRANDED) #14 GAGE OR SMALLER.
 - b. DOUBLE CONDUCTOR, #18 GAGE OR SMALLER.
4. THESE CONNECTIONS ARE FROM RANGE CARDS.
5. INDICATES L&N WIRING.
6. ON SINGLE RANGE RECORDERS, RANGE NO. 2 IS NOT PRESENT - NO CONNECTIONS REQUIRED.

THERMOCOUPLE COMBINATION	EXTERNAL TO INSTRUMENT		INTERNAL OF INSTRUMENT	
	COUPLER	CONDUCTOR	COUPLER	CONDUCTOR
CHROMEL-COBT.	CHROMEL	ALUMINUM	CHROMEL	ALUMINUM
IRON-CONST.	IRON	CONST.	IRON	CONST.
CHROMEL-ALUMEL	CHROMEL	ALUMEL	CHROMEL	ALUMEL
PLATINUM-RH	PLATINUM	RH	PLATINUM	RH

COLOR CODE	LETTER
K - BLACK	Y - YELLOW
W - WHITE	A - GRAY
G - GREEN	V - VIOLET
R - RED	P - PINK
B - BLUE	S - SLATE
N - BROWN	T - TAN
O - ORANGE	

CAUTION:

CUSTOMER CONNECTIONS ARE MADE TO L1, L2 AND GROUND. NO OTHER CONNECTIONS ARE REQUIRED. WIRING OF FREQUENCY TRANSDUCER AND INPUT TERMINAL BOARD ARE DONE BY L&N.

TYPICAL CUSTOMER CONNECTIONS

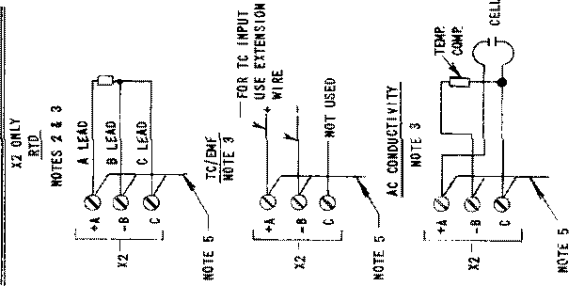


Fig. 1-12—Customer connections—Direct Frequency Recorder.