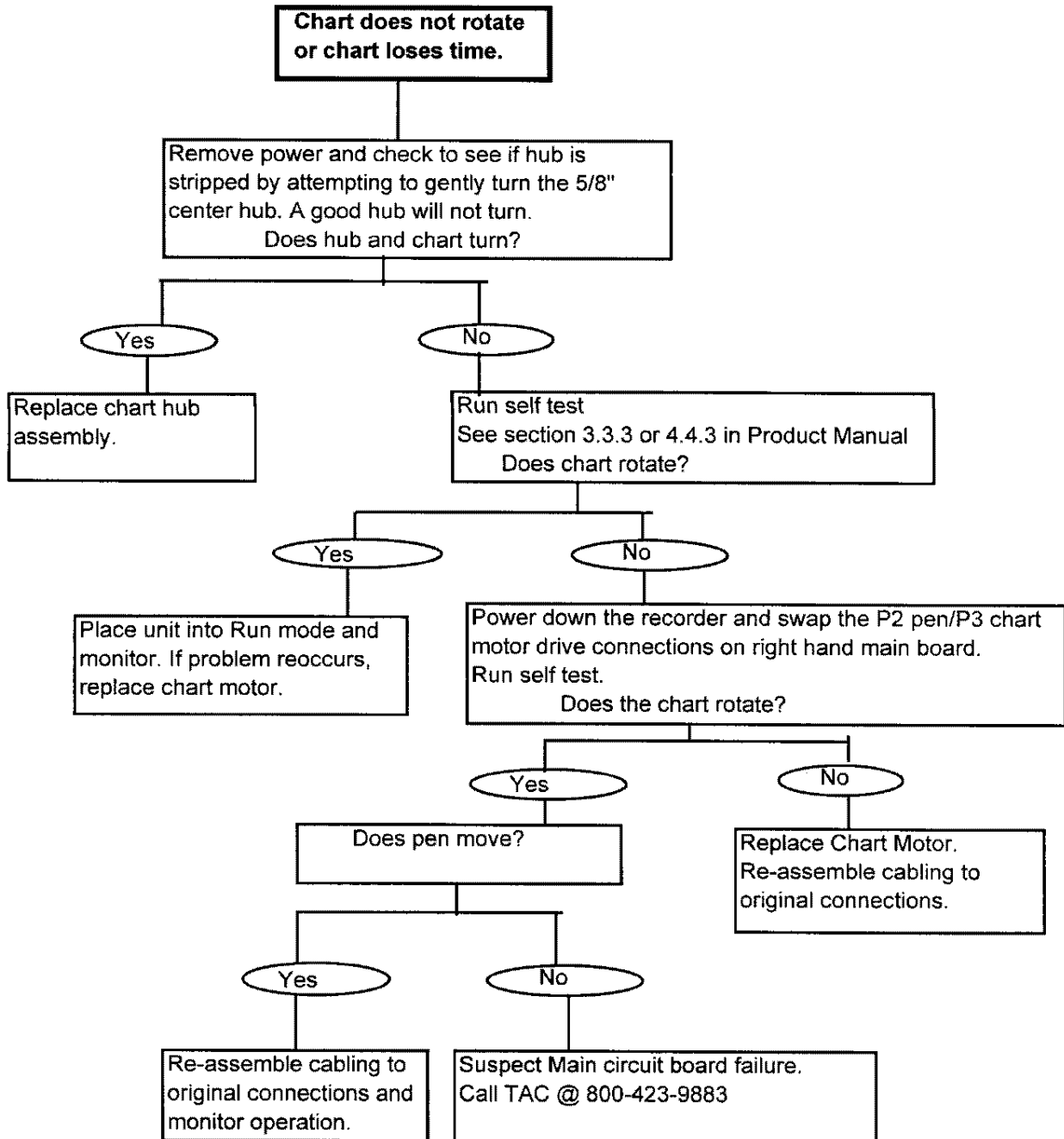
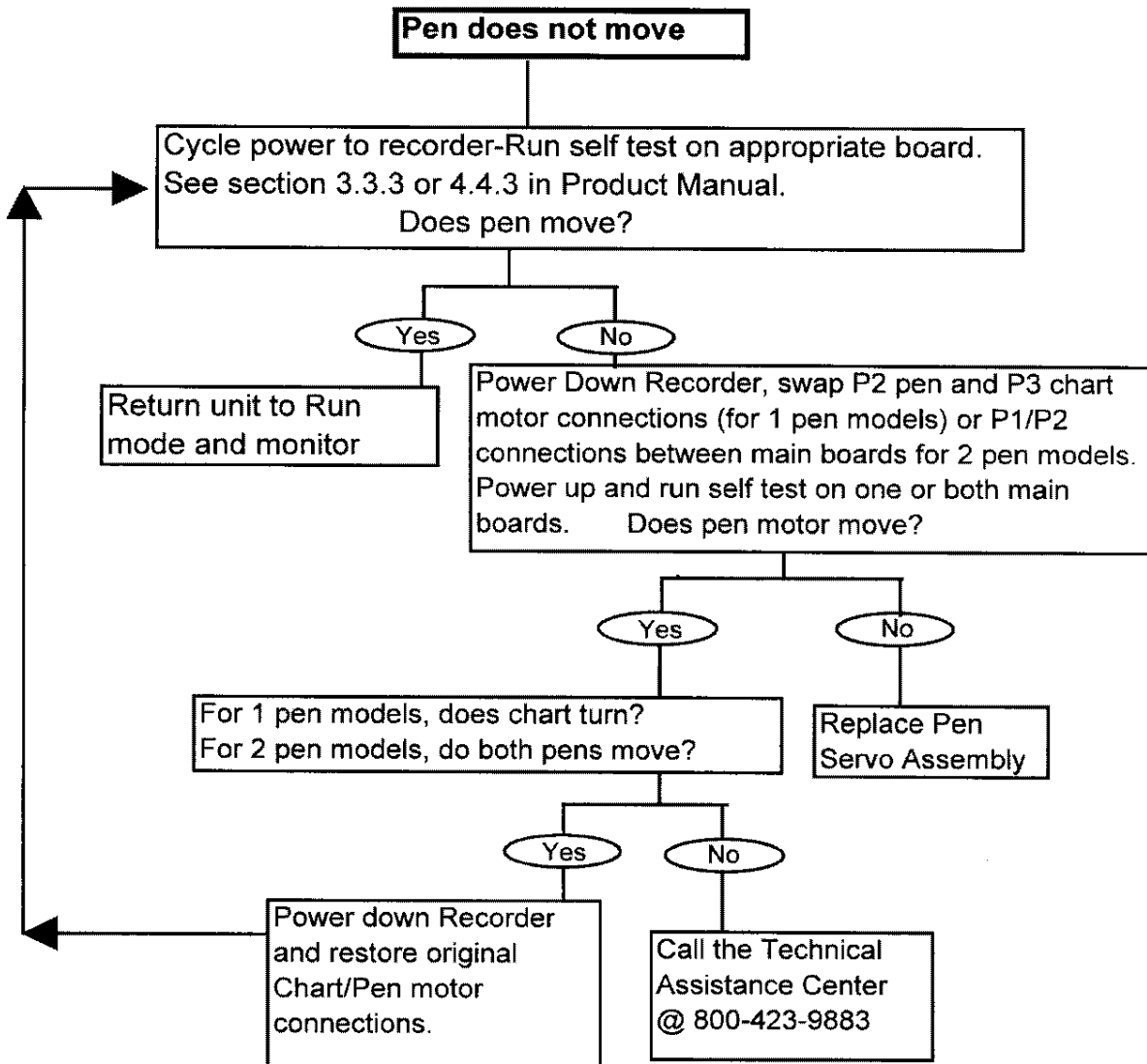


# DR4300 Circular Chart Recorder Troubleshooting Guide



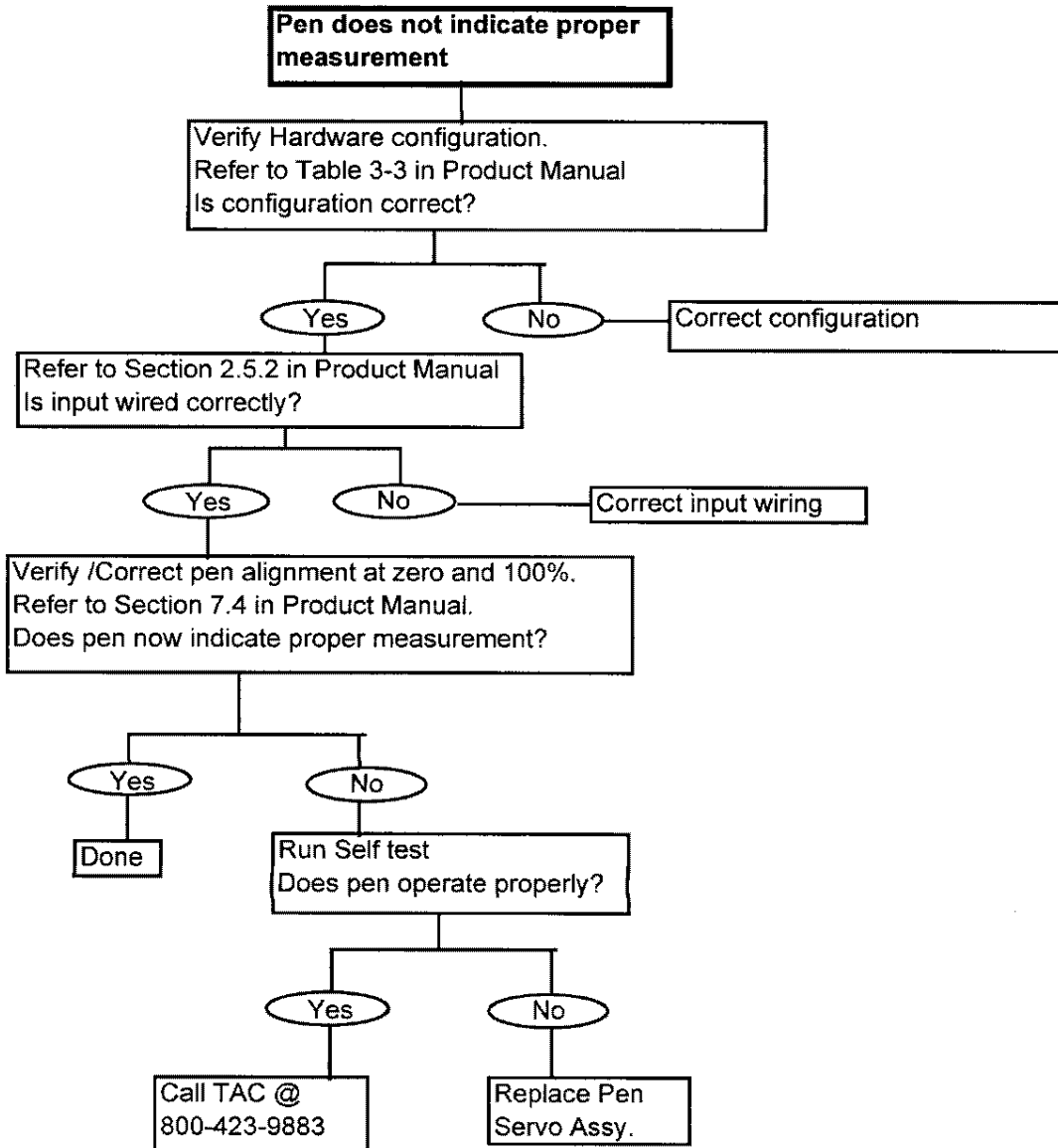
**CAUTION:** Power must be removed from the recorder when changing motor connections. Altering connections with power applied will damage the circuit board.

## DR4300 Circular Chart Recorder

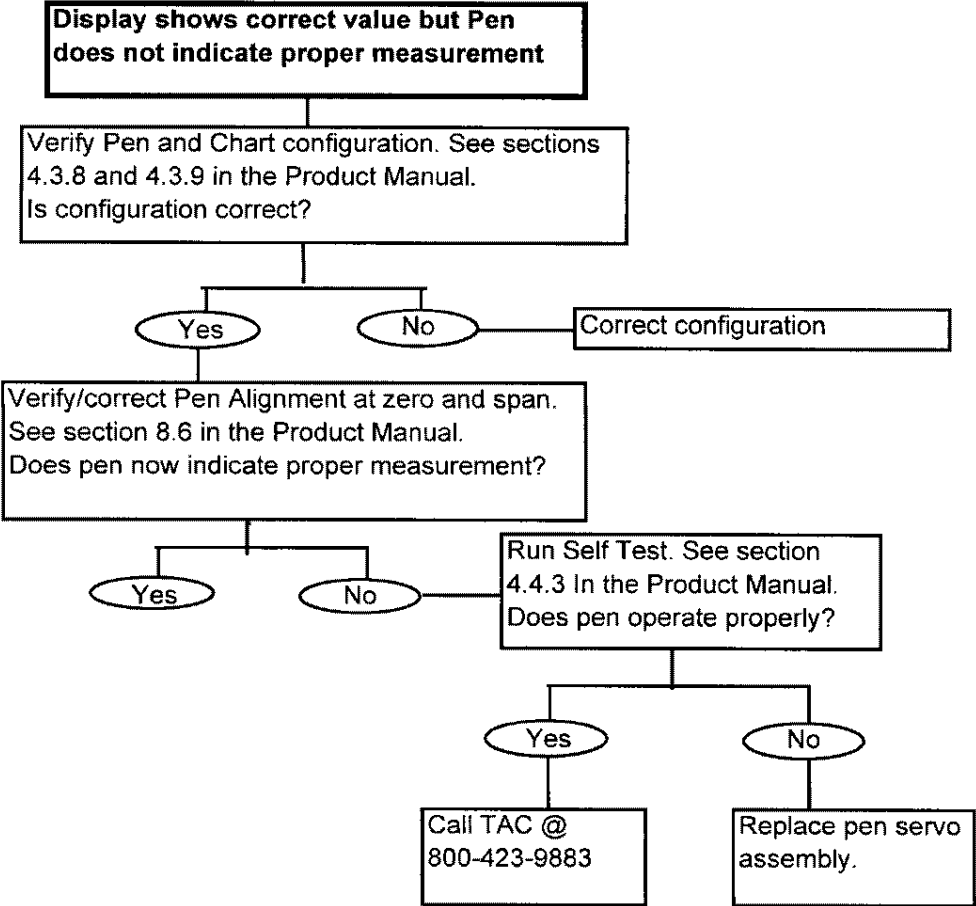


**CAUTION:** Power must be removed from the recorder when changing motor connections. Altering connections with power applied will damage the circuit board.

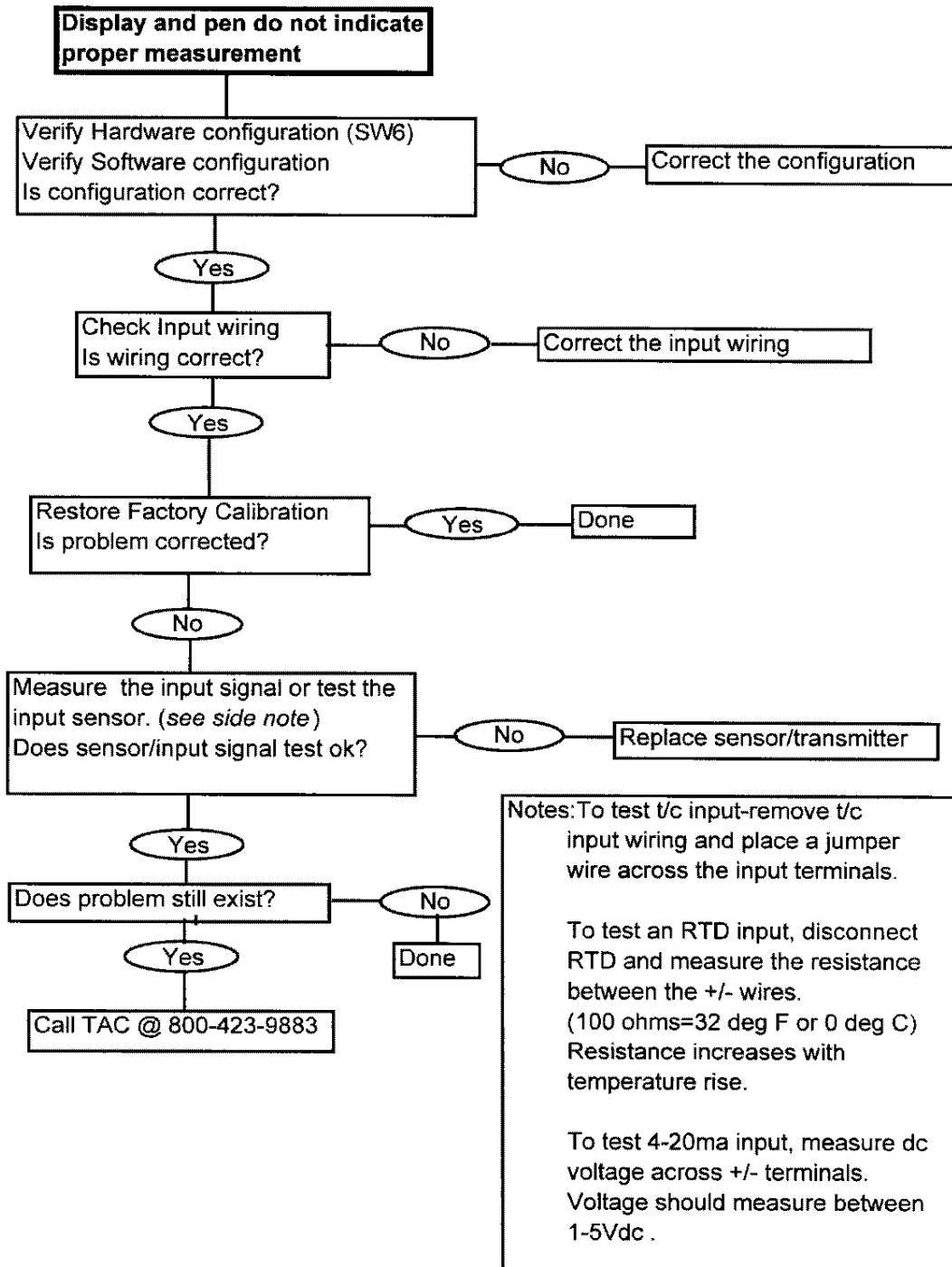
# DR4301/ 4302 Recorder Without Display



# DR4311/ 4312 Recorder With Display



# DR4311/ 4312 Recorder With Display



# DR4311/ 4312 Recorder with Display and Control

