

# HWIOPC Server

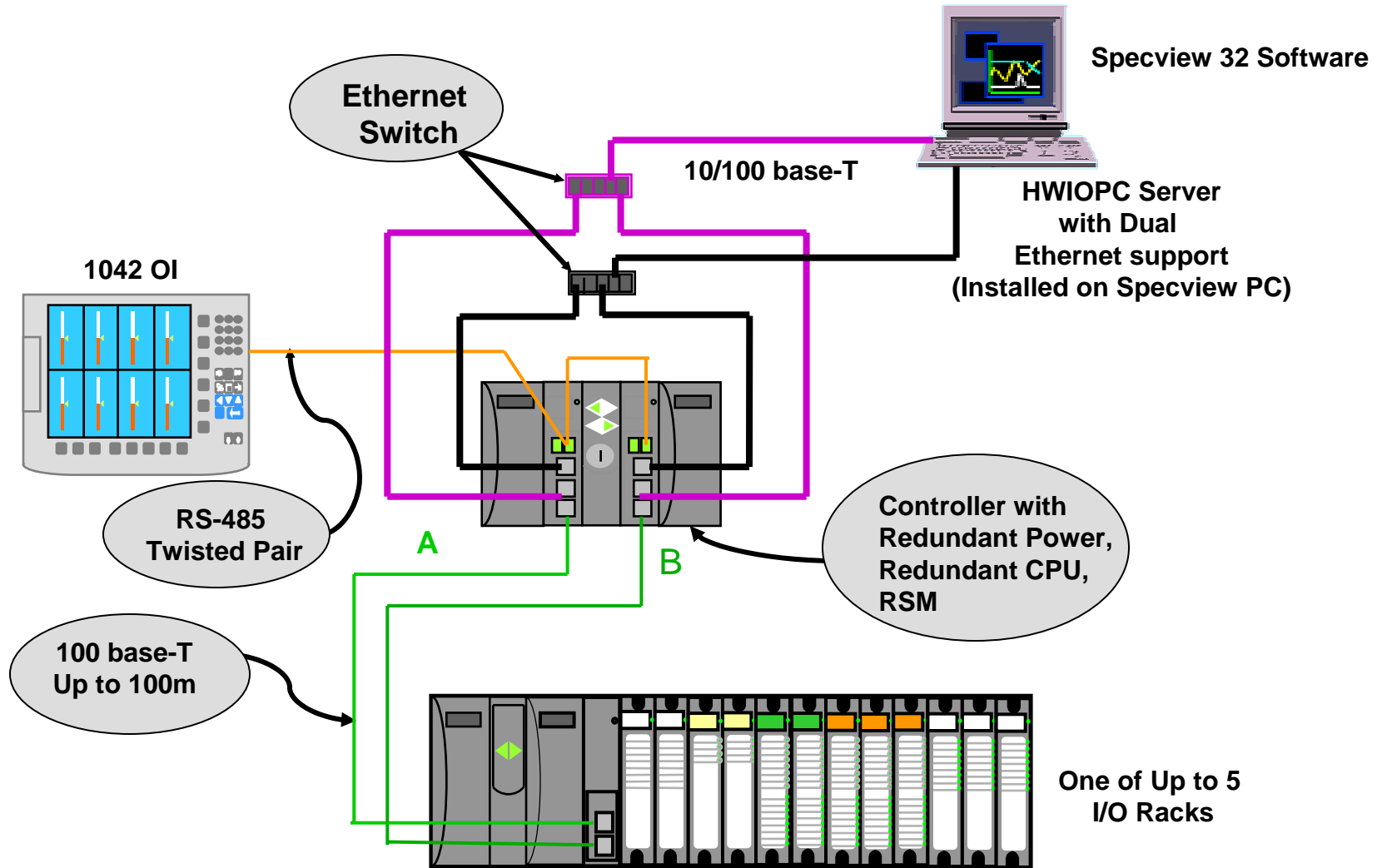
## HWIOPC Interface to Specview 32



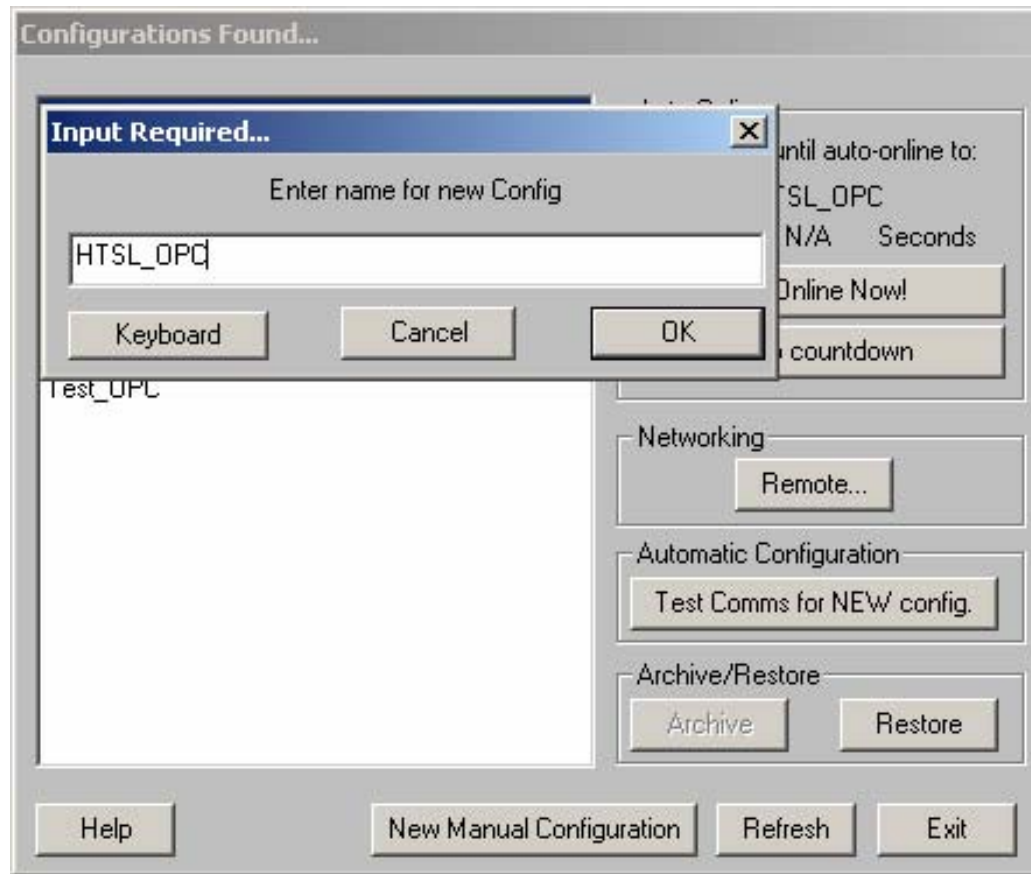
*For HC900 Controllers*

- **Start HWIOPC Service**
- **Configure the address space of OPC Server**
  - 1. Configure for HC900 Controller**
    - 1) Add a device group
    - 2) Add a device (HC900 controller)
    - 3) Open the device
    - 4) Import points for a file exported by HC Designer
      - 1) Use “All Modbus Registers” report
      - 2) Make sure Title and Author are entered prior to export
    - 5) Add tag groups and tags manually (Optional)
    - 6) With HC900 connected to PC running OPC server, make sure that communications is OK (Open Device indication is Green in OPC Utility)

# Architecture

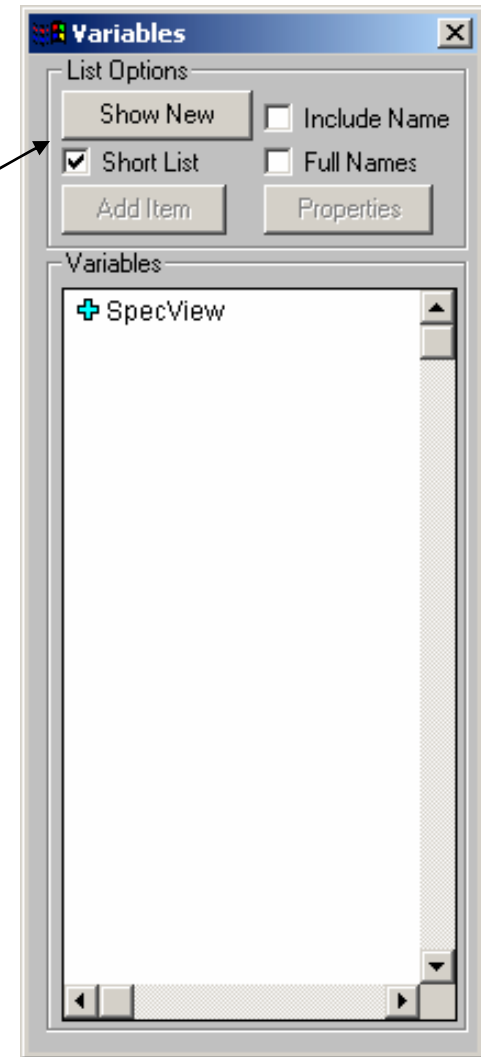
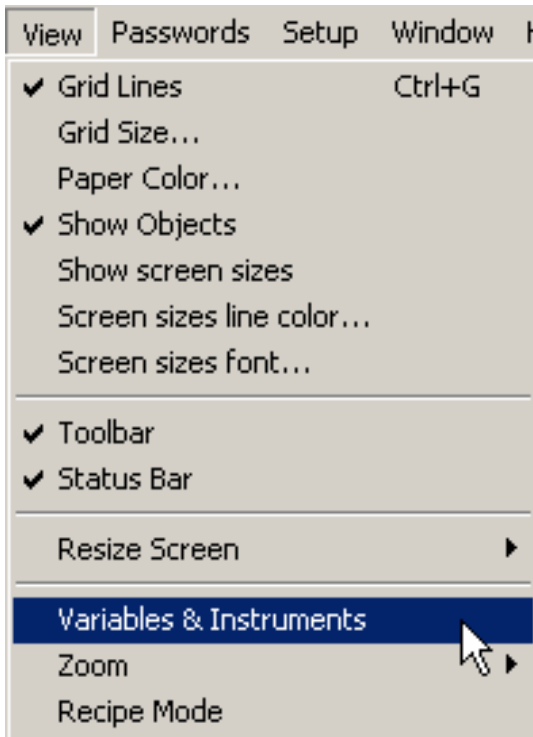


# Step1 – New Manual Configuration



1. Launch SpecView
2. Click New Manual Configuration
3. Enter Config Name

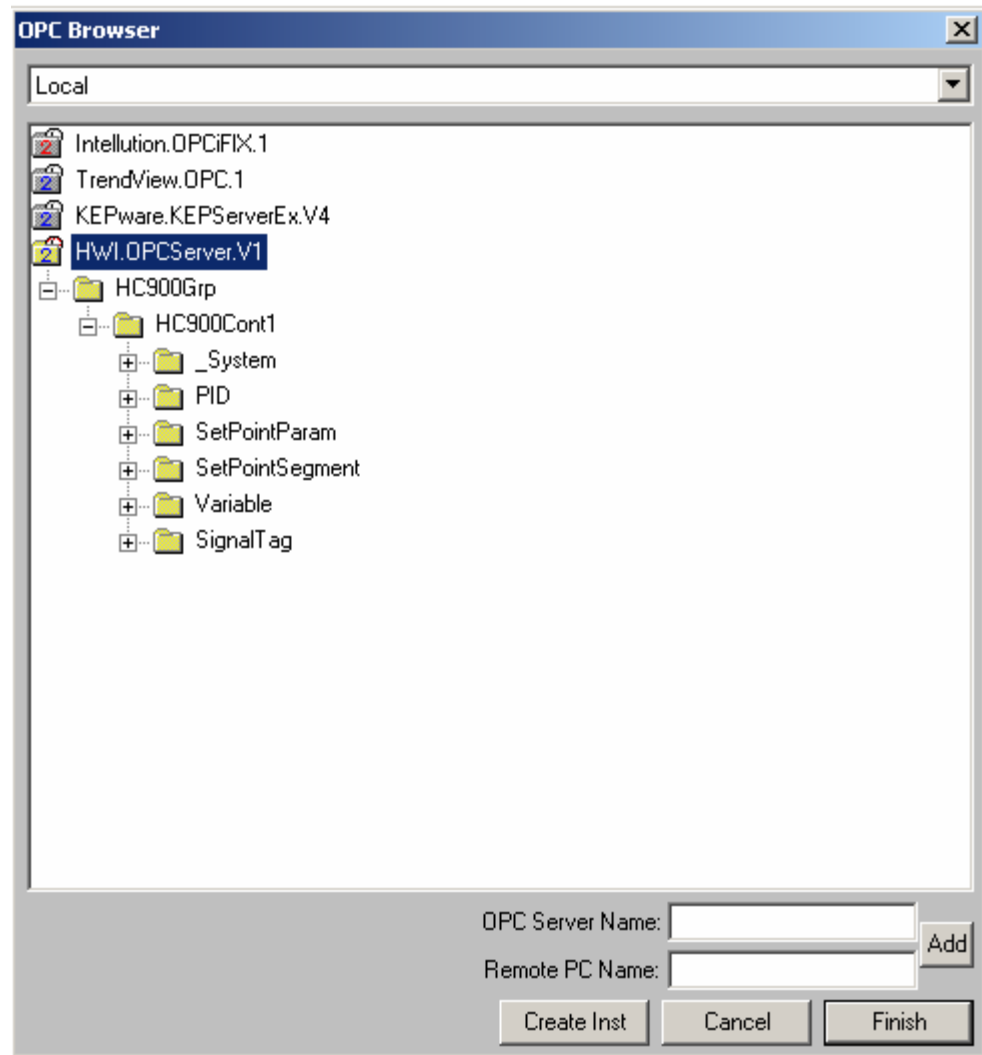
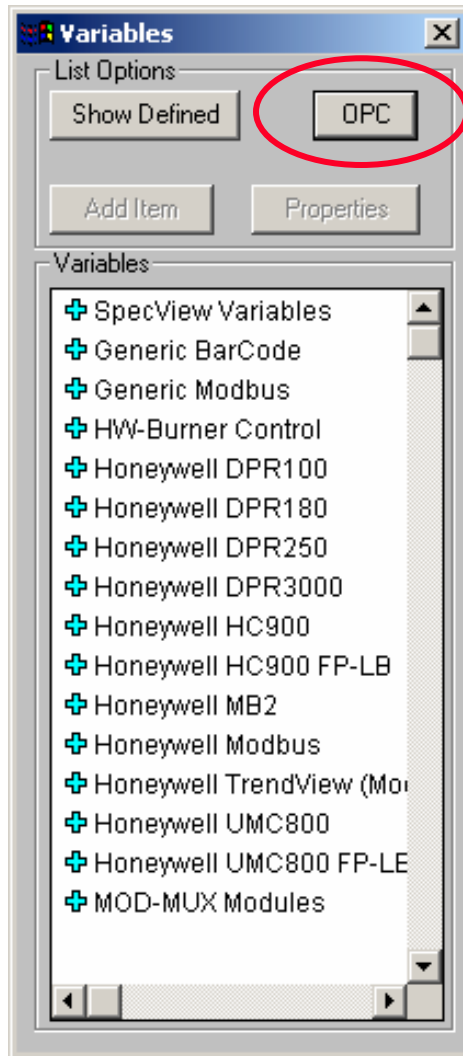
# Step2 – View Variables and Instruments



In Configuration mode:

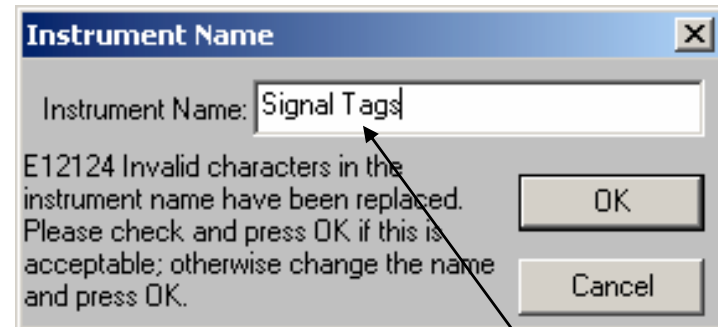
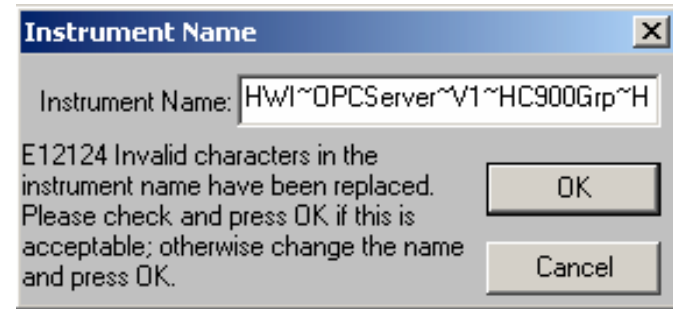
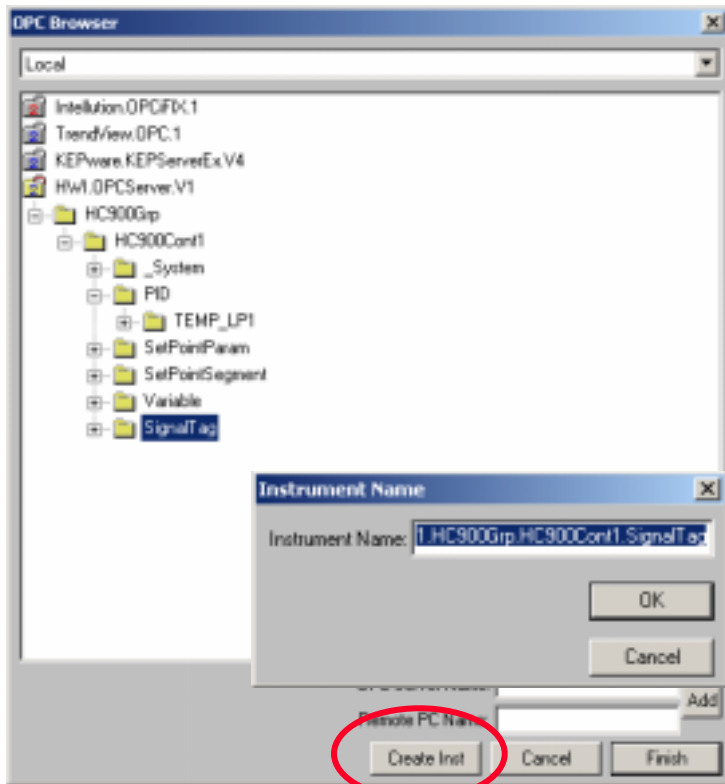
1. Select View->Variables & Instruments or click Variables button
2. Click Show New to create new group (Instrument View)

# Step3 – List available OPC Servers



- Click OPC button to list available OPC Servers, select HWI.OPCServer.V1

# Step4 – Create Instruments from HWIOPC

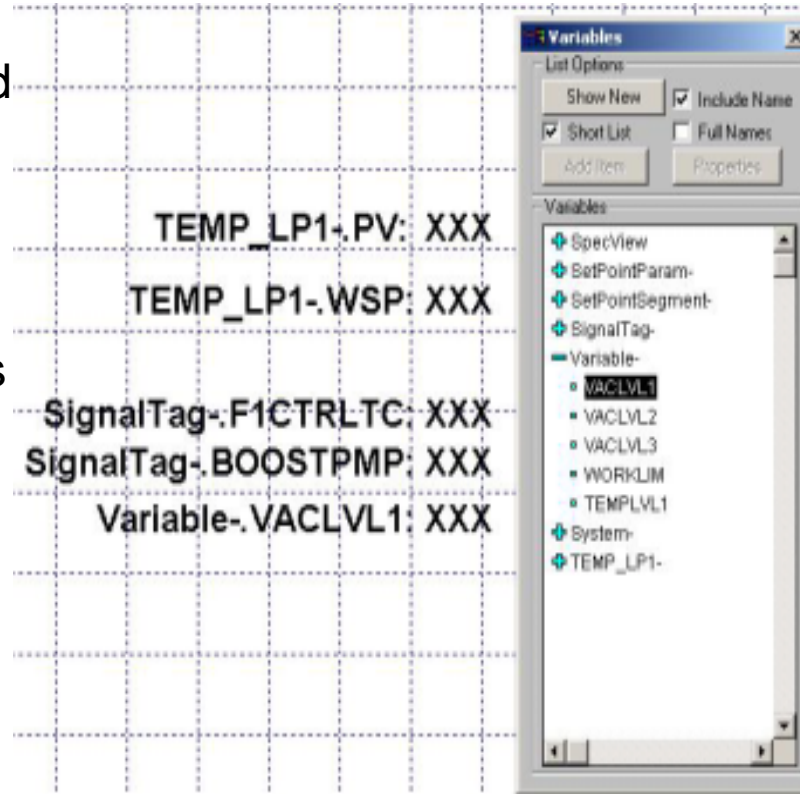


Changed Instrument Name

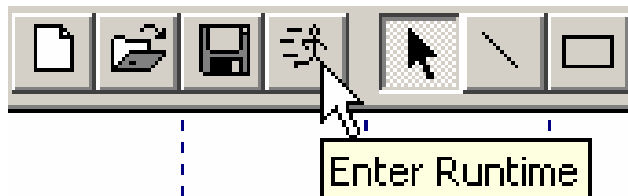
- Expand tag group folders below Device name, select tag group, then click on Create Inst
- Specview automatically changes “.” delimiter to “~” - change Instrument name or directly click OK. You can also change the Instrument name in the Variables list (Properties-Rename Only)
- Repeat for all tag groups, selecting sub-tag groups where applicable. Do not select PID, for example, instead select each loop tag name below PID such as TEMP\_LP1 as shown. This also applies to SetPointParm and SetPointSegment groups. Then click Finish.

# Step5 – Create screen using Variables

- Click on “Show Defined” variables
- Select desired variable and add item to configuration screen (.gdw)
- Change text description for tag (if used at all)
- Apply variables to other objects
- Name and save .gdw

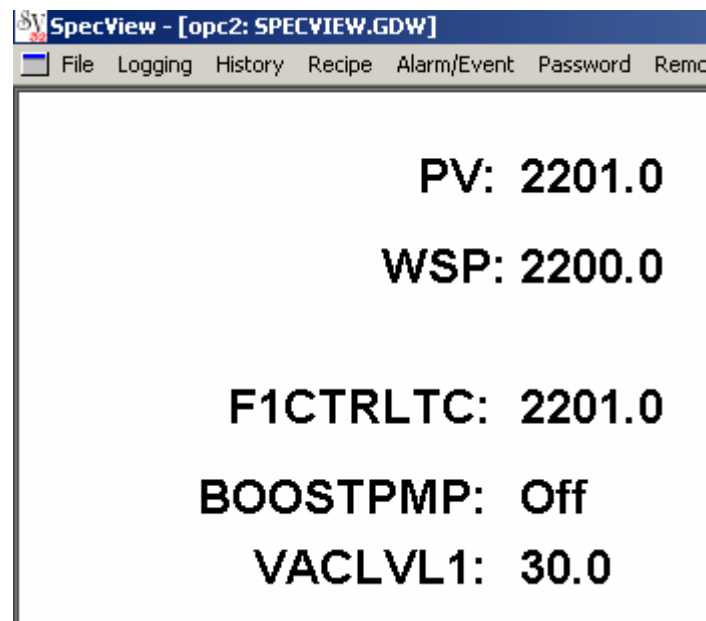
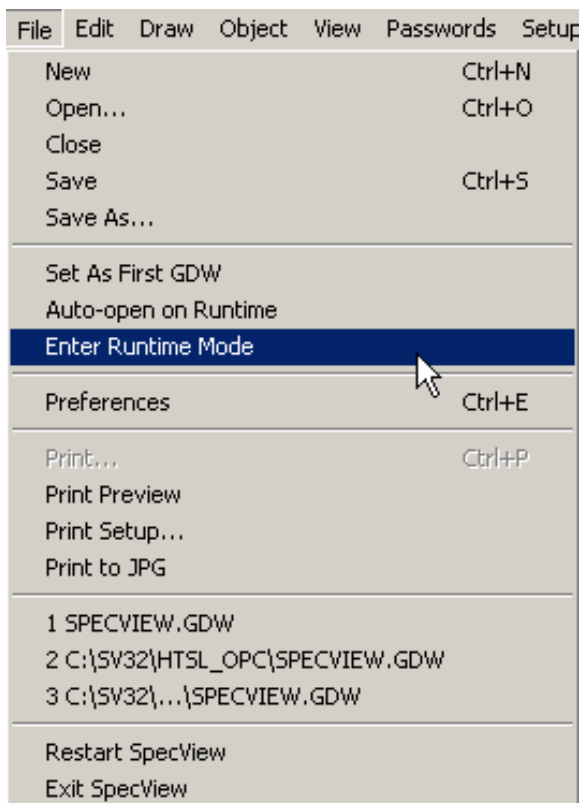


# Step6 – Monitor in Runtime Mode



Enter Runtime Mode:

- Click Enter Runtime button or select File->Enter Runtime Mode

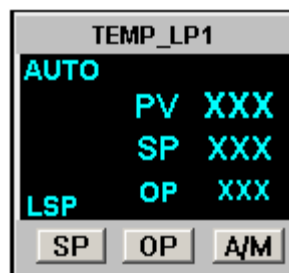


- There is no canned PID or SP Programmer Instrument

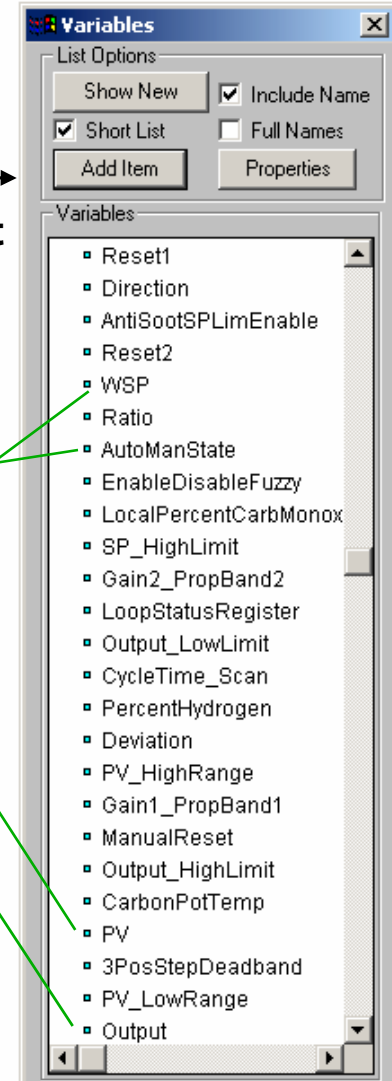


- Must create using graphic tools, Variables, Buttons

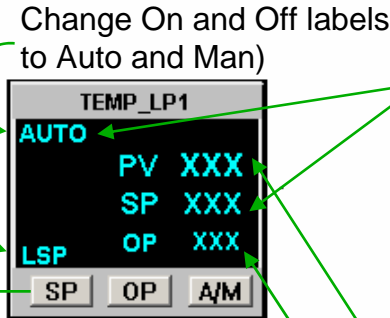
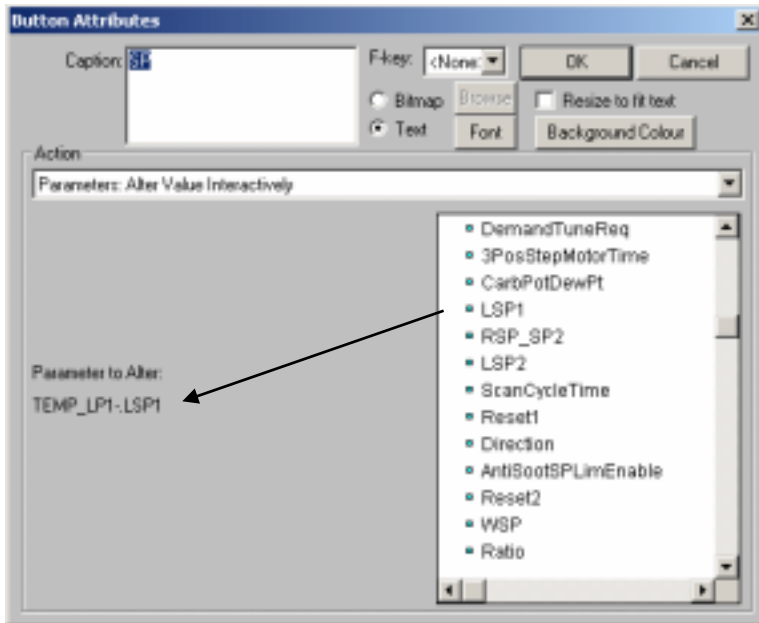
PID Example:



# Creating a PID Interface



Select Variables from List for selected PID, apply to object



Change On and Off labels to Auto and Man

RemLocSPState (change On and Off labels to Rem and Loc)

Define Button Actions for SP (LSP1), OP (Output), A/M (AutoManState)