

SA2000 Application Note

Instructions for SDC625 Software with MC toolkit Hardware

Honeywell is offering our MC Toolkit hardware with SDC625 software (includes HART Device Description capability). There are two separate software programs installed on the Handheld PC; MC Toolkit software and SDC625 software.

MC Toolkit Software allows full configuration, calibration, monitoring, and diagnosis of Honeywell ST 3000 Pressure Transmitters and STT 3000 Temperature Transmitters that are in the DE (Digitally Enhanced) or HART communications mode. The MC Toolkit also allows configuration and monitoring of all other Manufacture's HART pressure and temperature transmitters. The SDC625 software, based on HART Device Description technology, is capable of configuring, monitoring, and diagnosing all HART transmitters or devices registered with the HART Foundation.

Not all DD's may be stored on your SDC625 database. When you purchased your MC toolkit, the current DDs' (as released by the HART Foundation via their CD-ROM to HART Members) were placed on the scandisk memory chip effective at that time.

If there is a new DD's, because a device manufacture has come up with one, it will not be included in the database. We would request that you contact the respective device manufacturer in order to have them send the new DD's. You can then use the DD Copier file in the MC toolkit to put the DD file in the right structure. You can refer to the last few pages of MC Toolkit Users Manual for a short description of DD Copier. The HART Foundation has committed to putting new DDs' on their website but have not committed to when it will be done.

Note: We have become aware through our interoperability testing of HART devices on our Honeywell Experion PKS Distributed Control System that certain vendor devices may experience longer then expected DD parameter call up times and that we expect that the same problems to manifest themselves on the MC Tool Kit loaded with the SDC 625 software.

The HART Communication Foundation is aware of this situation and we suggest you contact them to assist you in identifying which devices they understand to be currently problematic and when a resolution is expected.

SA2000 Application Note

Turn on iPAQ following the pictures/instructions below. Your iPAQ may be different than the one pictured but the instructions should be the same.



Reset button, on bottom. Use stylist to reset. May need to do this if locks up.

SA2000 Application Note



This is the first or Main Screen. Take the stylus or pointer and choose or tap on the start at the top.

SA2000 Application Note



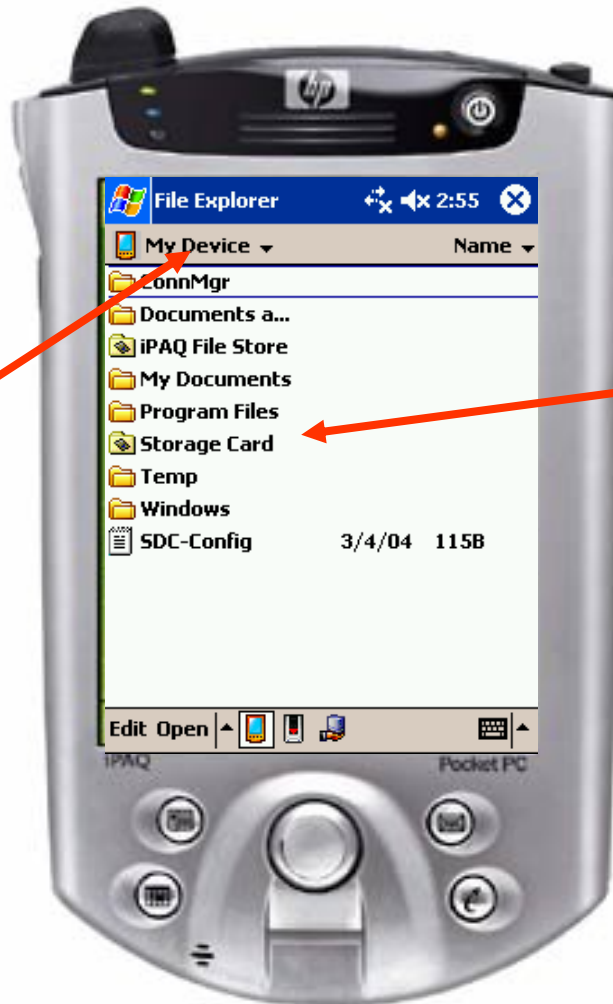
Choose the
"Programs"
from the list.

SA2000 Application Note



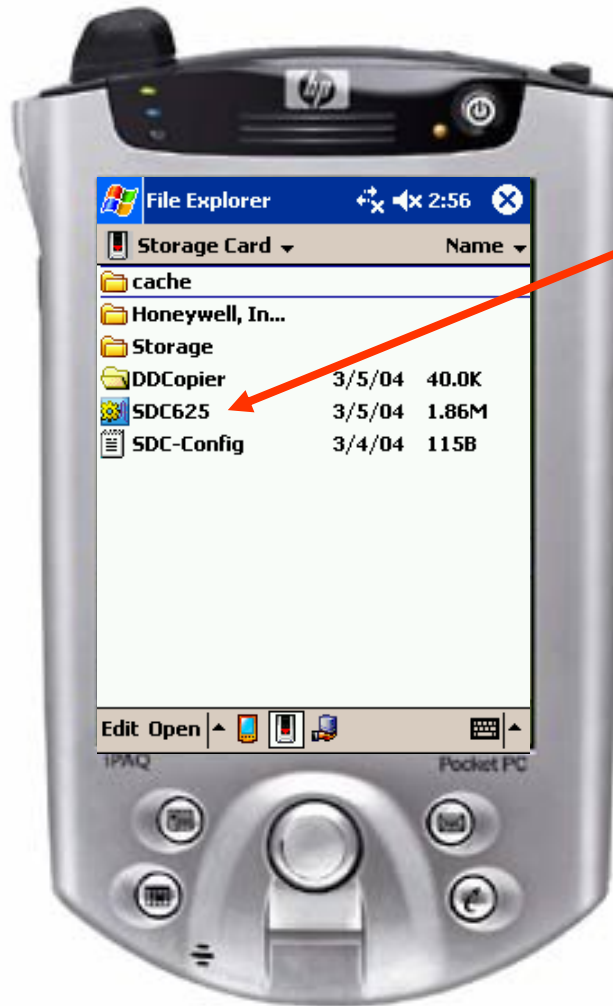
SA2000 Application Note

You may need to click on "My Device" to go up a level and drill down from there.



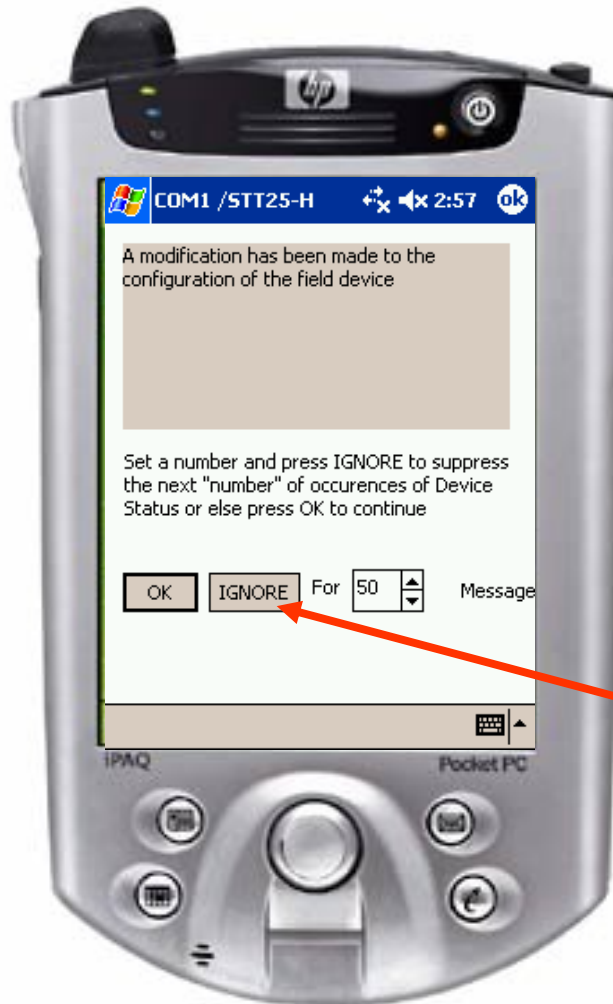
You will need to browse so that you see the "Storage Card" directory.

SA2000 Application Note



Choose the SDC625 application to start it.

SA2000 Application Note



Often this will be the first screen that will be displayed, once the application loaded the configuration from the device. Choose "Ignore". It is an indicator that a configuration may have changed.

SA2000 Application Note



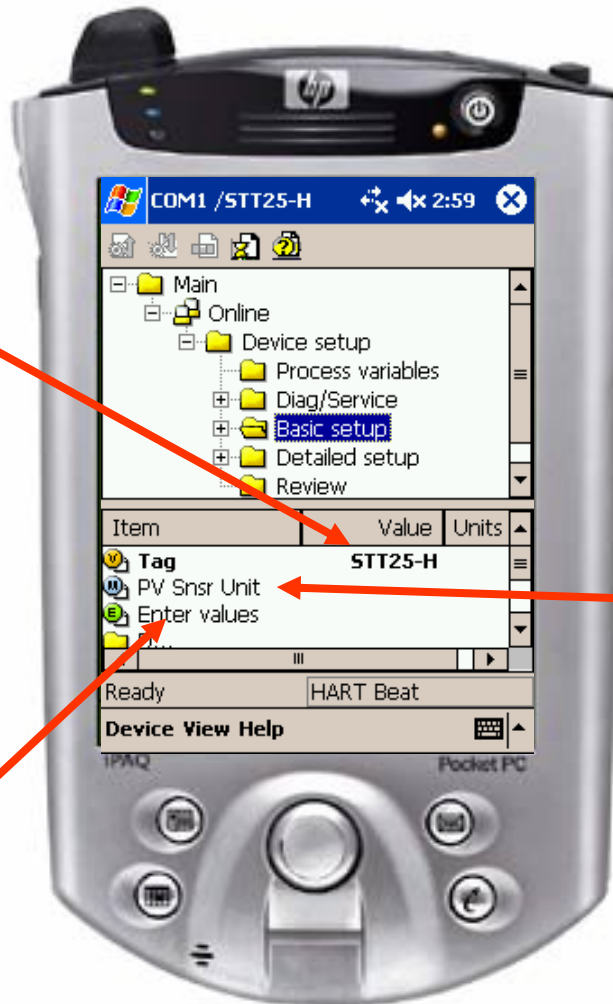
A screen similar to this will be displayed. As you can see it is a "Tree View" based solely on the Devices DD.

As you browse through the Tree, different values will be displayed below.

SA2000 Application Note

The bold items can be modified by clicking on the value field. They are typically and orange icon.

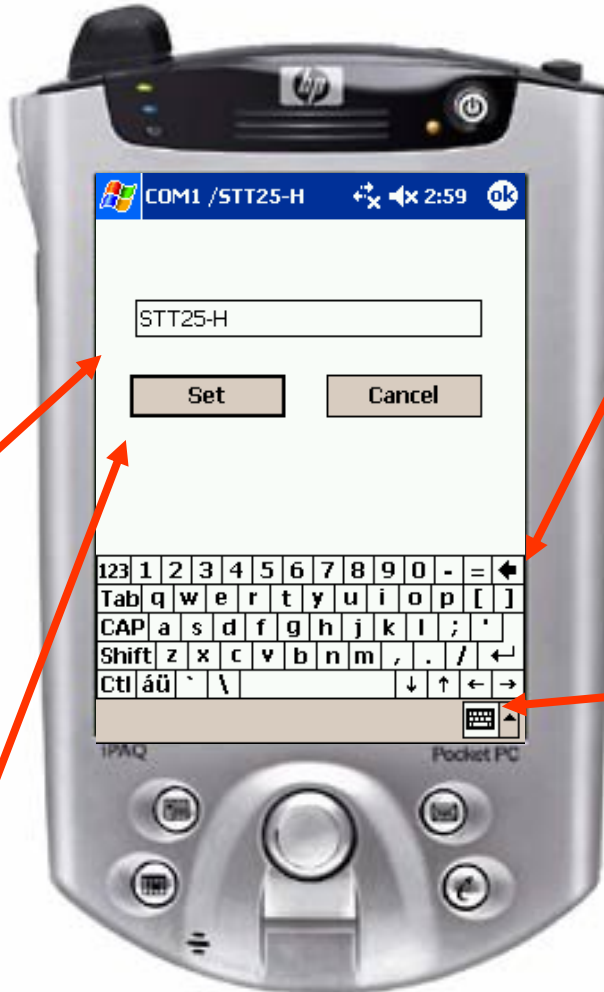
The green icons are also editable fields, just click on them as well.



The blue icons, represent methods and can be run by choosing them and following the instructions.

SA2000 Application Note

This is a sample screen after choosing a bolded value (orange icon) for change. You can highlight the value and then delete it with the keyboard below. Press "Set" once finished.

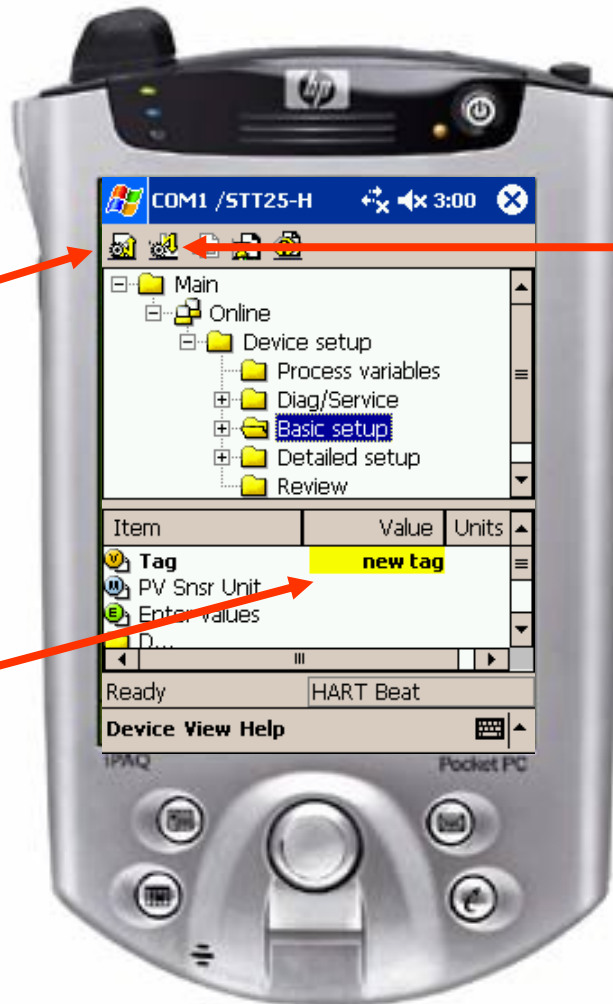


This is the backspace. Make sure to remove blank characters if desired. To bring up the keyboard, just click on this icon. Then use the stylus to enter values on the keyboard.

SA2000 Application Note

To upload the new value into the device, choose this first icon.

After Choosing "Set" on the previous picture, the new value will be highlighted by yellow.



If you decide to go back to the original value, before uploading this new value. You can choose this icon to get the previous value directly from the device.

SA2000 Application Note

After uploading, you can see the new value. It is no longer highlighted and is bold.

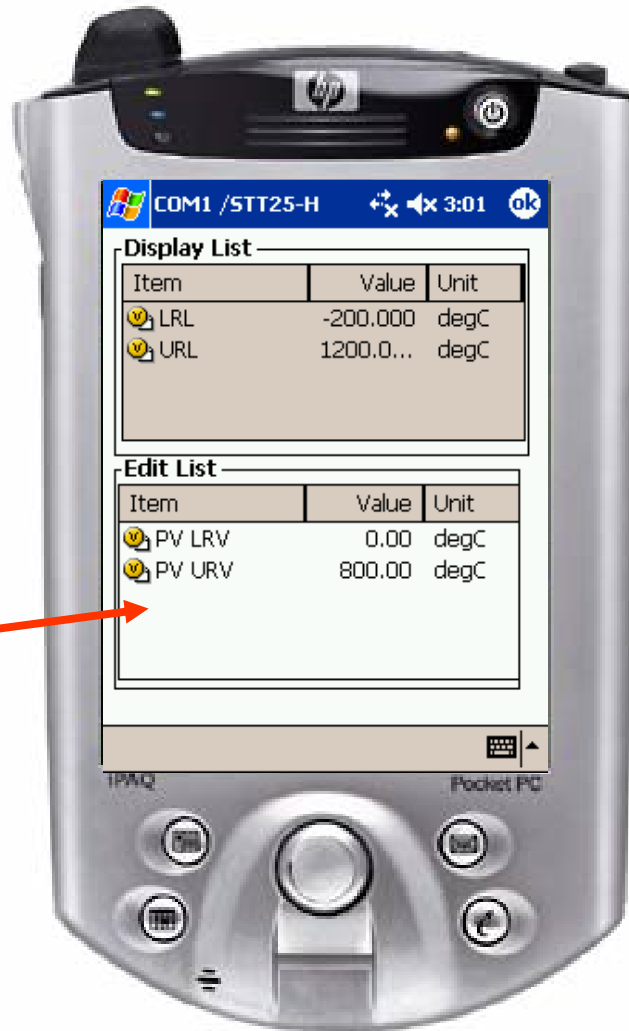


SA2000 Application Note

Here is a sample method being run (blue icon). It may require the user to make several choices as the method runs.



SA2000 Application Note



The editable values will provide an edit box, allowing the user to make modification

SA2000 Application Note

When you are ready to exit, choose the "Device" button at the bottom and then choose "Exit"

