



Steeplechase Software, Inc.  
771 Airport Blvd.  
PO Box 3049  
Ann Arbor, MI 48106-3049  
Tel: (313) 995-3348  
Fax: (313) 995-7218

## COMPANY PROFILE

Steeplechase Software delivers PC-based software that simplifies factory automation. Our products let engineers focus on their manufacturing process and spend less time programming and integrating complex control systems.

## VISUAL LOGIC CONTROLLER

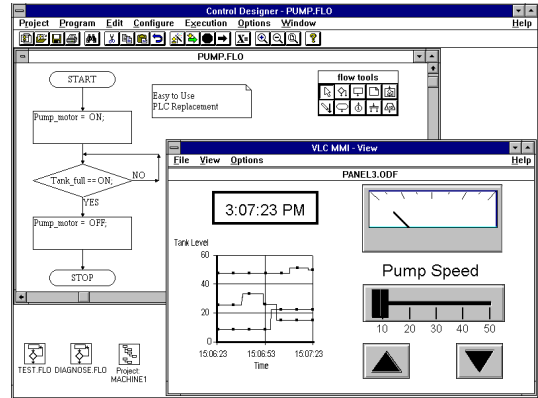
### The Easy Choice for PLC Replacement

You can easily turn an industrial or desktop PC into a high-speed machine controller—and combine a PLC processor, programming terminal, and operator interface in a single system that costs up to 50% less.

Just run Steeplechase Software's Visual Logic Controller™ (VLC™) on your Windows-based computer, enter your control program, and design your operator screens. If you know how to point, click and drag, then you already know how to use our software. We've made it so easy to use, you don't even need training.

When you're ready to test out your program, you can first use the built-in simulator: force your inputs, monitor your outputs, and watch the execution of your flow charts. Then plug in the I/O system of your choice, and run your machine directly from your computer.

Steeplechase has also improved the control language itself. Instead of converting your machine sequences to relay ladder diagrams, you draw them the way you think of them: as flow charts. Everyone understands flow charts, even when they were drawn by someone else!



With our software and your I/O, your PC transforms into a high-speed controller for assembly machines, conveying systems, production test equipment, and other critical manufacturing machinery.

## HIGHLIGHTS

**Slash Control System Costs** – Your PC can replace three separate components: PLC programming terminal, PLC processor, and operator interface—at a savings of 50% or more.

**Speed Program Development** – Our graphical flow charts make programming so much easier and faster, you can finish your application in a fraction of the time.

**Improve Uptime** – If the machine stops, you can instantly pinpoint in the flow chart where the machine halted. Reduce diagnostic time from many minutes to just a few seconds.

**Gain PC Price/Performance** – Thanks to 100 million PC users, you can choose the combination of price, performance and features to meet your precise needs.

**Attain Windows Flexibility** – Share real-time data with other Windows programs on the same computer: print production reports from Excel, perform statistical manipulations with Visual Basic, and even use your favorite MMI, simply by accessing real-time control data through DDE.

## **VLC FEATURES**

With Steeplechase Software's Visual Logic Controller (VLC), you can develop your entire control system much faster than with traditional PLCs. Develop control programs through graphical flow charts, control I/O directly from the PC (eliminating the PLC), develop and run the operator interface on the same PC and share data with other Windows-based programs through DDE

### **Easy Flow Chart Programming**

Engineers find that flow chart programming is more intuitive and natural than other control languages, because it works exactly like you think. Machine operators understand flow charts with virtually no training, so they can assist during setup and troubleshooting. In fact, VLC provides interactive troubleshooting flow chart for operators as well as engineers.

### **Windows Editing**

The VLC has full Windows editing features. You may already know how to use many functions, such as cut, copy, paste, and multi-level undo/redo, and direct printing.

### **On-Line Help System**

The on-line help system may entirely eliminate the need to refer to a manual. In a couple of hours, you'll be a VLC expert!

### **Built-in Real-Time Simulator**

After you design your control system, you can use the built-in simulator to trigger your inputs and watch your flow chart execute. In fact, you can simulate machine response in real time with flow charts that can actually test your program.

### **Utilize all the Smart Distributed System I/O Capabilities**

VLC supports all the capabilities of the Smart Distributed System I/O. The System I/O data is directly gathered into the VLC database. Smart Distributed System Diagnostic messages can be accessed directly in the flow charts.

### **Connect to Multiple I/O Families**

The VLC supports other popular I/O systems. You can mix and match System I/O with other I/O families to meet your application. In fact, you can change I/O families as easily as changing printers in Windows: just select one from a drop-down box.

### **Set Fast and Precise Scan Times**

You can set your program's scan rate from 5 to 500 milliseconds. During each scan, the VLC reads inputs, executes your control programs, and writes outputs. In the time remaining, it executes DOS and Windows applications in the background.

### **Easy Operator Interface**

The VLCMMI provides Windows-based tools for building easy-to-understand operator screens. In minutes, you can create a screen consisting of panel instruments such as push-buttons, indicators, slide switches, panel meters, bar graphs, message displays, multi-pen trends, and more.

### **Animate Graphics for Sizzling Displays**

You can easily create animated graphics to illustrate your machine or process. Simply use the system's built-in draw functions or import graphics from other programs. You can draw rectangles, ovals, polygons and lines, in up to 256 colors, and combine these into complex illustrations. By double-clicking, you can tie graphics to I/O and data to control color, position, size and fill.

### **DDE Server**

VLC provides a DDE server, which enables other Windows applications to share data with VLC's control and operator interface functions. You can access an entire universe of Windows software to enhance your system. For example, to transfer data to Excel, simply specify the VLC server and provide the tag name.

You can use DDE to interface to other operator interface packages, statistical process control software, or database collection running on the same PC. Or if you prefer, you can write special functions in Visual BASIC or 'C' that can share data with the VLC through DDE