

**Types of Non WeldThru Force Sensors****1. WRE Rod End Load Cell**

Description--mounted outside current path onto cylinder rod thread with insulator. Adds 2-4" to length of cylinder rod.

Advantage--good force measurement with little space intrusion near weld. Cables well protected.

Disadvantage--may see effects of friction, ram inertia, etc. Requires use of cylinder spacer.

Best Application--press welders, robot guns where WeldThru does not fit.

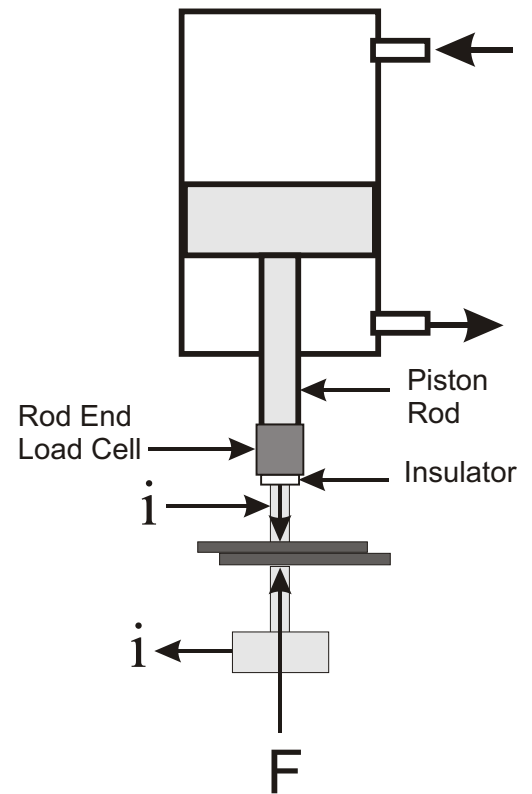
**2. WPK Pancake Load Cell**

Description--mounted outside current path onto cylinder rod thread with insulator. Adds 2-4" to length of cylinder rod.

Advantage--good force measurement with little space intrusion. Cables well protected.

Disadvantage--may see effects of friction, ram inertia, etc. Requires pull plate and spacing up of cylinder.

Best Application--large press welders where WeldThru does not fit.

**Rod End Load Cell****Pancake Load Cell**